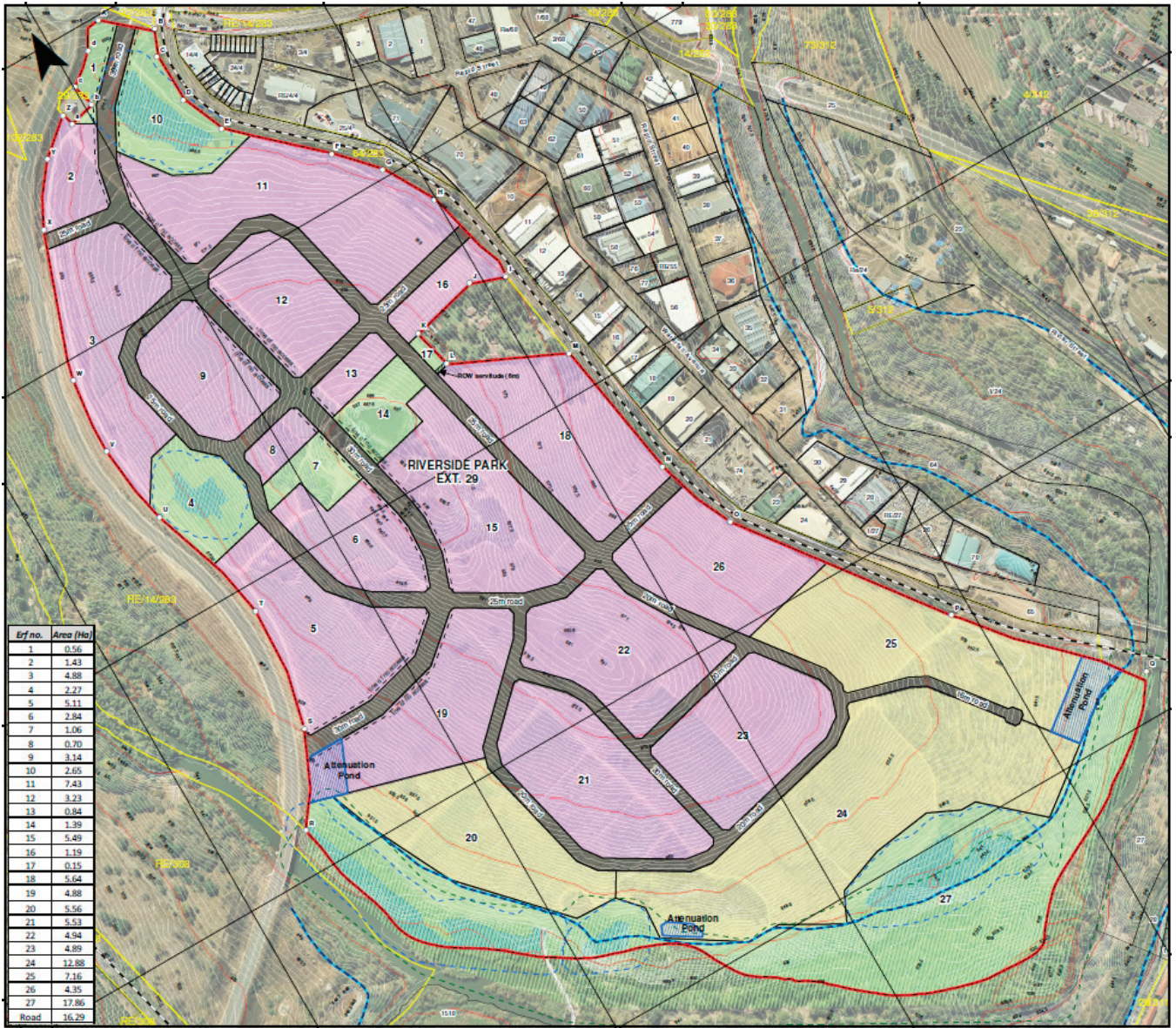




# RIVERSIDE EXTENSION 29

Located on Portions 11, 13, a portion of the Remaining Extent of Portion 14, Portions 15, 16, 24 and 25 of the farm, Boschrand 283 JT





**Property description**

Riverside Extension 29, located on Portions 11, 13, a portion of the Remaining Extent of Portion 14, Portions 15, 16, 24 and 25 of the farm, Boschrand 283 JT

**Registered owner**

HL Hall & Sons (Pty) Ltd

**Property size**

134.35 ha

**GPS Co-ordinates**

25°27'15.19"S 30°57'21.39"E

**Approved zoning**

Erven 2, 3, 5, 6, 8-13, 15, 16, 18, 19, 21-23 and 26 – “Special”  
 Erven 20, 24 and 25 - “Residential 2”  
 Erven 1, 4, 7, 10, 14, 17 and 27 - “Private access road”



## RIVERSIDE EXTENSION 29 (phased into Riverside Extension 37-43)

Located on Portions 11, 13, a portion of the Remaining Extent of Portion 14, Portions 15, 16, 24 and 25 of the farm, Boschrand 283 JT

### Approved land use rights

Erven 2, 3, 5, 6, 8-13, 15, 16, 18, 19, 21-23 and 26 - Retail including places of refreshment, Value retail, wholesale, offices, motor sales market, hotel, convention Centre, Places of public worship and ancillary and subservient uses

### Development controls

#### Floor area ratio

Erven 2, 3, 5, 6, 8-13, 15, 16, 18, 19, 21-23 and 26 - Retail (limited to places of refreshment) to 26 000 m<sup>2</sup>

Value retail limited to 20 894 m<sup>2</sup>, Offices limited to 1 600 m<sup>2</sup>

Wholesale, light industrial and commercial uses limited to 194 395 m<sup>2</sup>

#### Height

3 storeys

#### Coverage

50 %

#### Town planning status

Township approved

## GET IN TOUCH WITH US TODAY

SABINE WALKER

Email: [sabine@halls.co.za](mailto:sabine@halls.co.za) | Tel: 013 753 5812 | Cell: 078 099 0876

JOE IZBOUD

Email: [joe@halls.co.za](mailto:joe@halls.co.za) | Tel: 013 753 5723 | Cell: 082 554 3657

### A MEMBER OF THE HL HALL & SONS GROUP

HL Hall & Sons Properties (Pty) Ltd

Registration No 1970/008171/07

Mataffin Farm, Cnr Samora Machel Dr & Matsafeni Rd, Nelspruit, Mbombela

PO Mataffin, Mpumalanga, 1205, South Africa

tel +27 (0) 13 753 5700 email [info@hallsproperties.co.za](mailto:info@hallsproperties.co.za)

Directors Prof D Mabunda, P W J Backwell

